



NORTH CAROLINA

Department of Transportation



NCLUG Tech TALK - PART I: The NCDOT CONNECT WorkSpace

Oak Thammavong – NCDOT Roadway Design Unit

September 30, 2020

NCDOT/NCDIT Panel

The NCDOT panel to answer questions during and after the presentation.

NCDOT ORD Implementation Manager

Jeff Garland

NCDOT Roadway Design Unit

Jason Moore

Roger Kluckman

Oak Thammavong

NCDIT CADD Services

Bob Wright

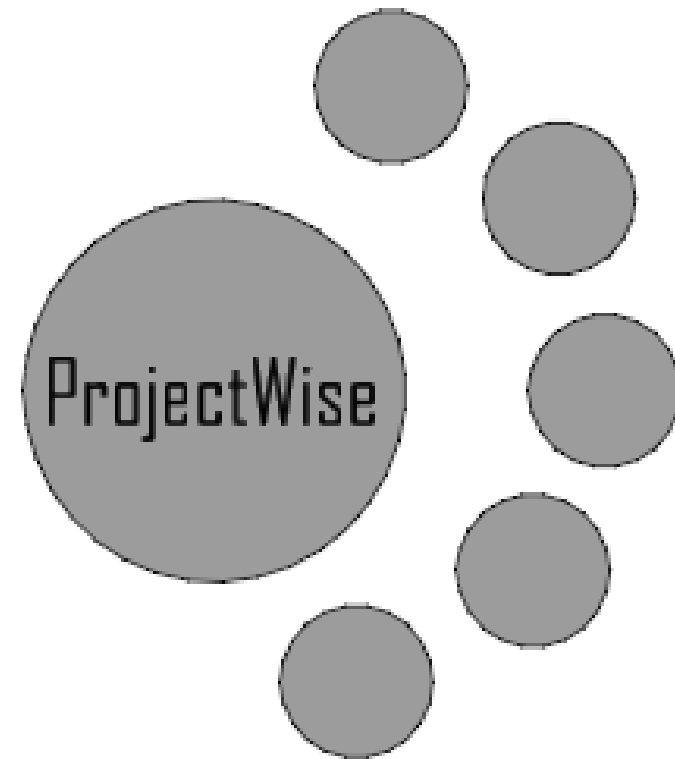
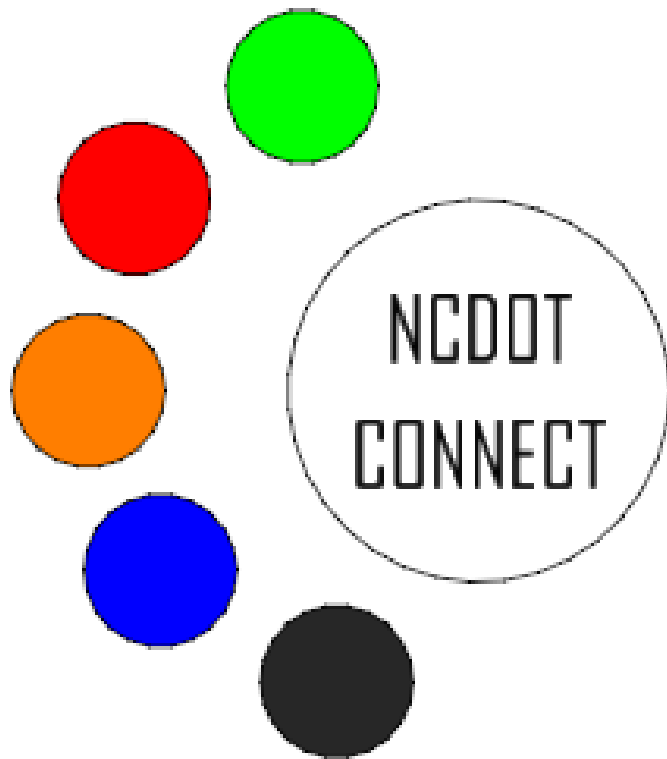
Rande Robinson

Kyle Nauman

NCDOT CONNECT Collaboration

- NCDOT ORD Implementation Team – Jeff Garland
 - Bentley
 - Private Sector/PEFs
 - NCDOT Divisions
 - NCDOT Units
 - NCDIT/CADD Services

Non-Managed vs. Managed WorkSpaces



NCDOT CONNECT Editions Utilization

- OpenRoads Designer (ORD)
- OpenBridge Designer/Modeler (OBD/OBM)-still being worked on)
- OpenRail Designer
- OpenGround Cloud (possibly in the future)

› Configuration › Organization-Civil › NCDOT › Seed ›

Name ^

- Sheets
- OBM-seed3d-English.dgn
- Seed2D - English Design.dgn
- Seed2D - English Rail Design.dgn
- Seed2D - SMU OBM DESIGN.dgn
- Seed3D - English Design.dgn

Documentations (PDF)

- The NCDOT CONNECT WorkSpace Diagram
- Universal-CONNECT-WorkSpace-Setup-PEFs-Guide
- Divisions-NCDOT-CONNECT-Server-WorkSet-Setup Guide
- WorkSpaces-WorkSets-FAQs
- **ORD Quick Reference Document**
- Custom Line Styles V8i Conversion Rescale to CONNECT Procedure
- Levels to Feature Definitions Diagram

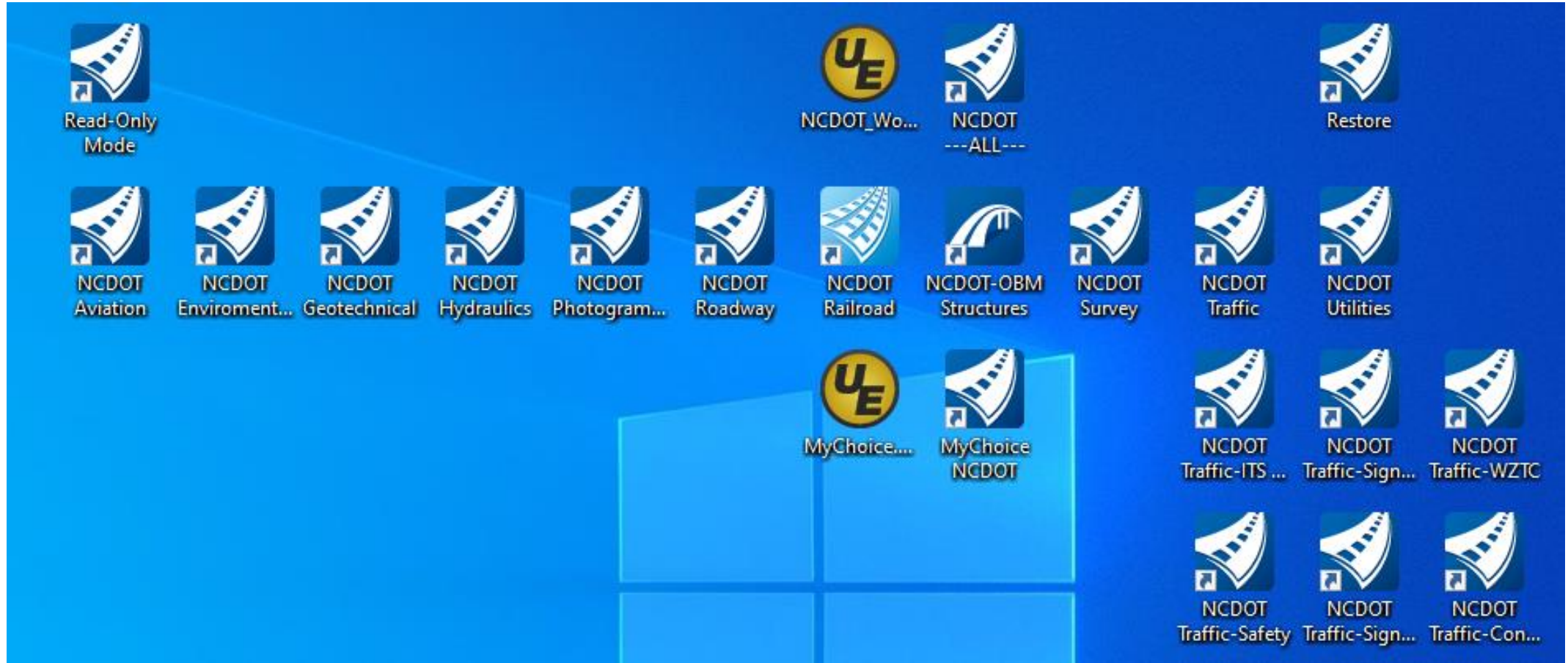
Organization

- WorkSpace Root Variable
- Standard Configuration
 - Organization (not used)
 - Organization-Civil – “Department-Standards”
 - WorkSpaces – Other DOTs (selectable)
- Disciplines (optional)
 - NCDOT Units
 - Future “Role” Picklist

Non-Managed (PW) WorkSpace Update

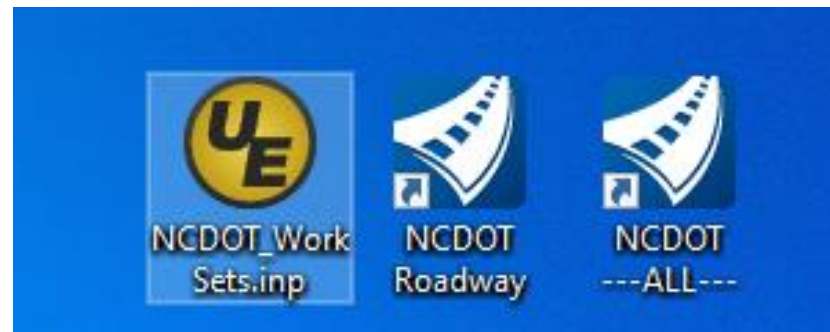
- ZIP (temporary)
 - Only overwrite files & folders with the same name
- UpdateConnectWs App (being fixed)
 - Delete everything and update
 - New WorkSpace Folder Structure
 - Each Unit Maintenance

Desktop Icons (Oh My!)



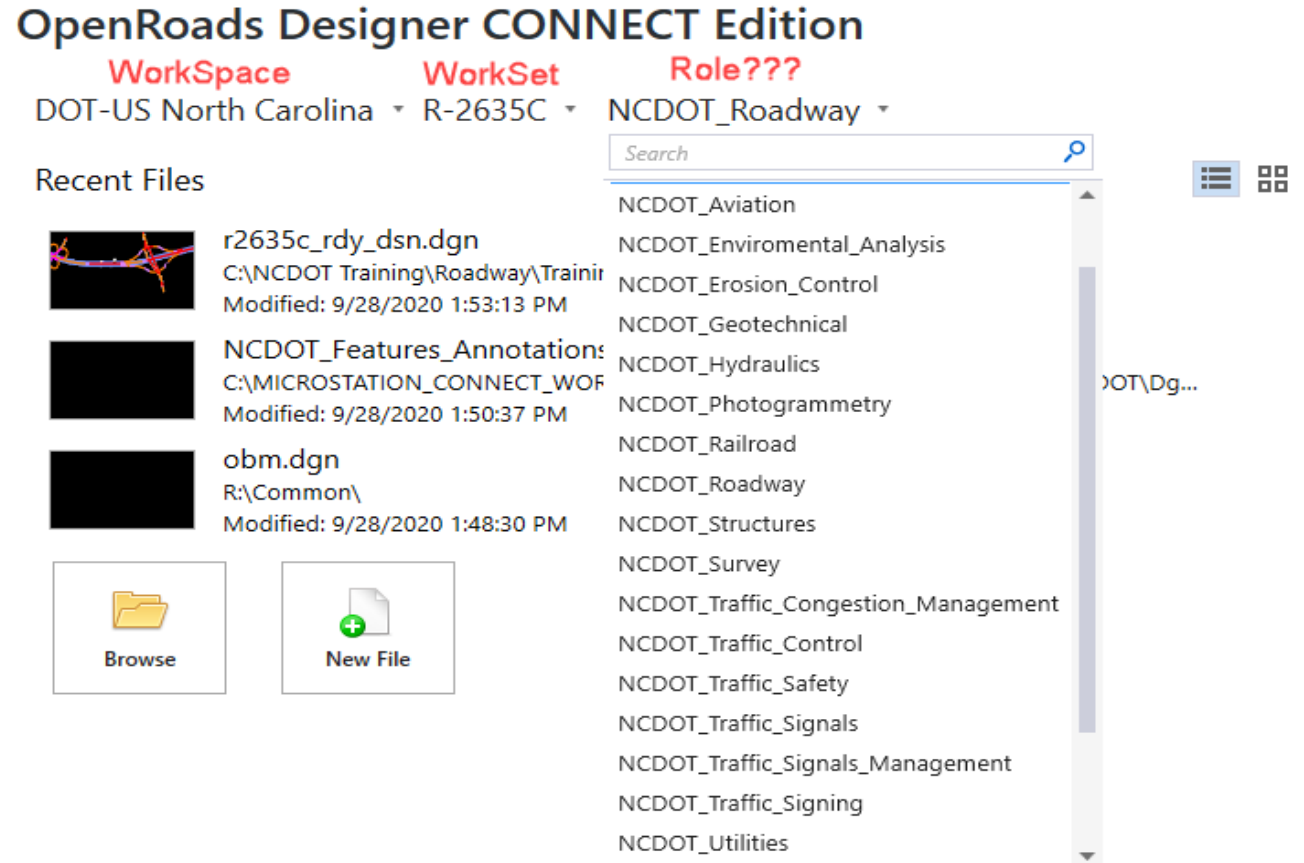
Minimum Desktop Items Required

- NCDOT_WorkSets.inp (required)
- Unit Specific Icon (Single) and/or “NCDOT_ALL”
- If MyChoice Icon, Then also MyChoice.inp



Desktop Icons

- Future “Role” Picklist
- Launch WorkSpaces:
 - Single (Traditional)
 - Multiple (MyChoice.inp Combinations)
 - “NCDOT_ALL”
- MyChoice.inp
- NCDOT_WorkSets.inp



MyChoice.inp Variable

- NCDOT_UNIT_COMBO
 - C0 - All NCDOT Department Disciplines
 - C1 - Roadway + Hydraulics (Default - DRN File)
 - C2 - Roadway + Hydraulics + Photogrammetry + Survey (Final Surveys -FS- File)
 - C3 - Signals + Signing + Traffic + Traffic_Control + TSU (Traffic, Signing, and Work Zone Traffic Safety plans)
 - C4 - Photogrammetry + Survey (Basemapping)
 - C5 - Roadway + Rail

NCDOT_WorkSets.inp Variables

- MY_WORKSET_LOCATION – Network Server Only
- NCDOT_USE_LOCAL_WORKSETS
 - L0: ProjectStore R Drive or Network Server
 - L1: C:\Projects\NCDOT (default)
 - L2: Unit Training/Admin
 - L3: WorkSpaces\WorkSets (Bentley “catch- all” default)
- NCDOT_UNIT_TRAINING_WORKSETS
 - Used only for “L2”
 - Specified when “NCDOT_ALL” or MyChoice Combo

WorkSpace Conversion from V8 Each NCDOT Unit

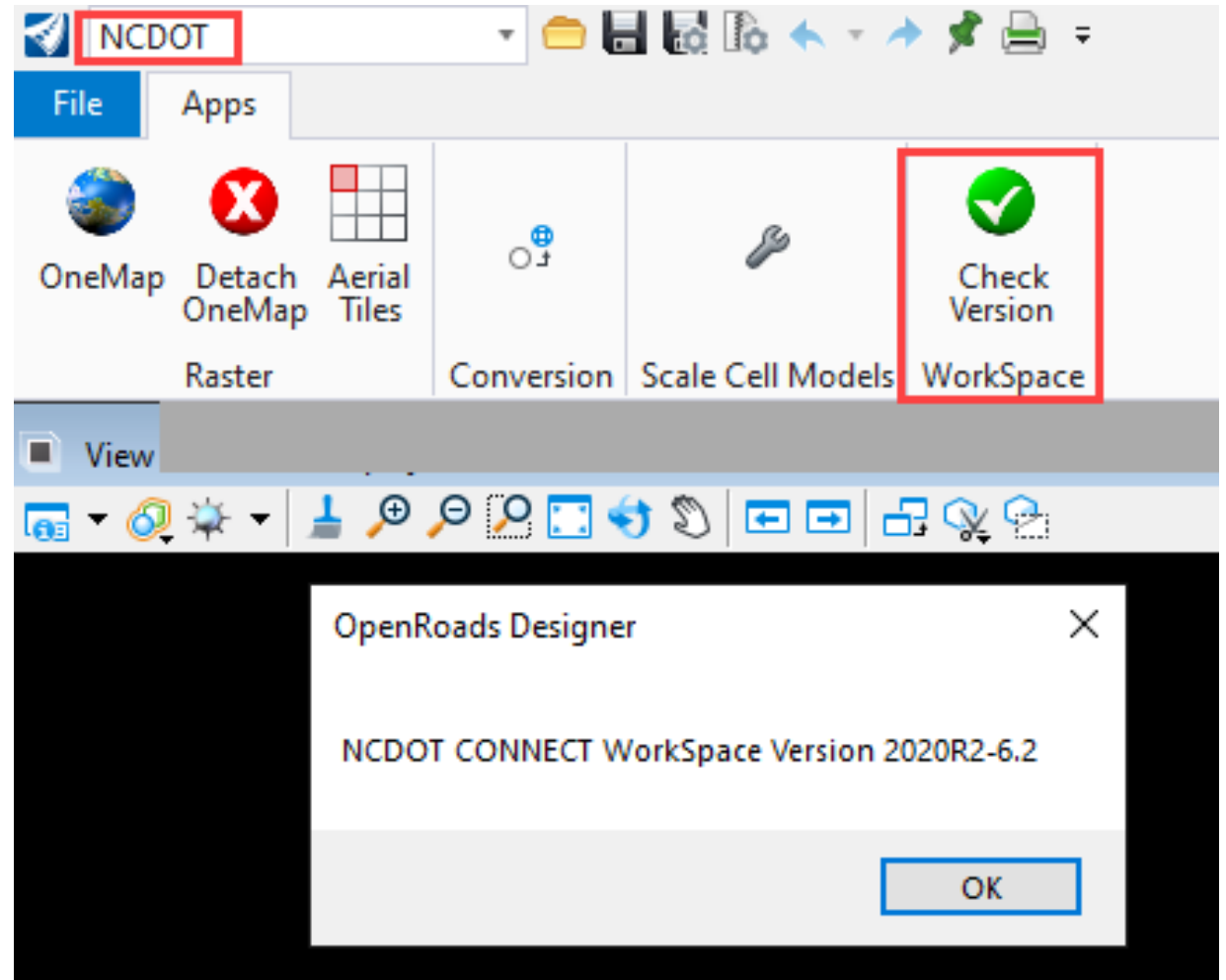
- Basic/Minimum Requirement
 - Levels
 - Cells (rescaled) – NCDOT Project Scale vs. ORD Annotation/Drawing Scale
 - 2D Custom Line Styles (rescaled)
 - Microstation Update 14 Utility
 - DGNLIB vs. RSC

WorkSpace Conversion from V8 Each NCDOT Unit

- Advanced (Full ORD Modeling Capabilities & Plans Production)
 - Element Templates
 - Feature Definitions
 - Text Styles/Text Favorites
 - Annotation Groups

WorkSpace Version Checker VBA

- Future upgrades:
 - Microstation Version
 - ORD Version



Thank You!

